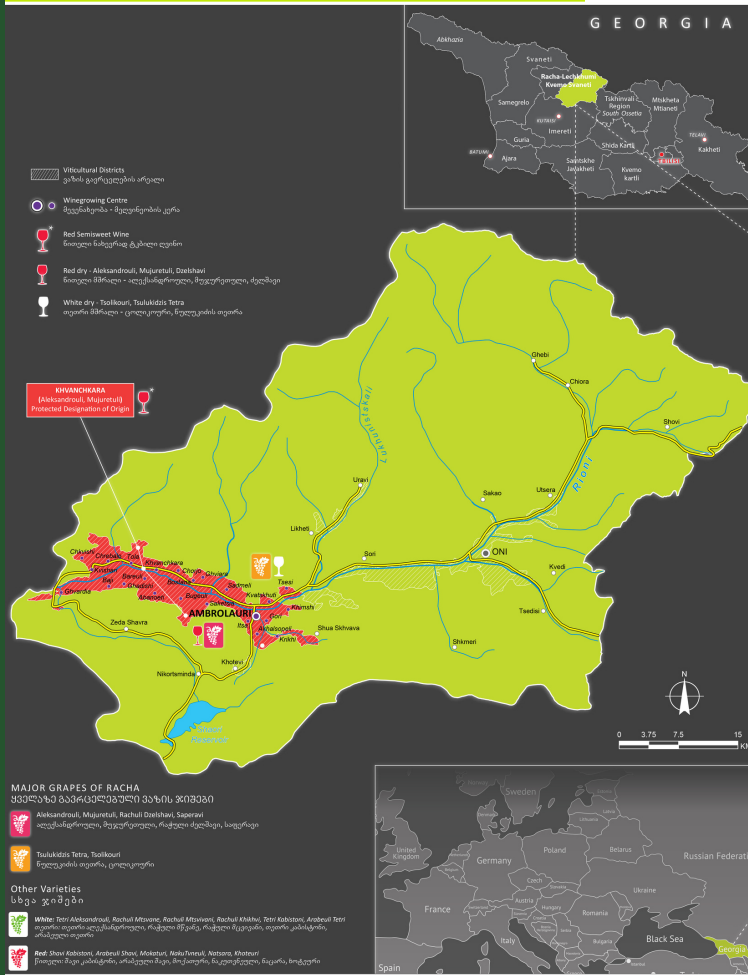
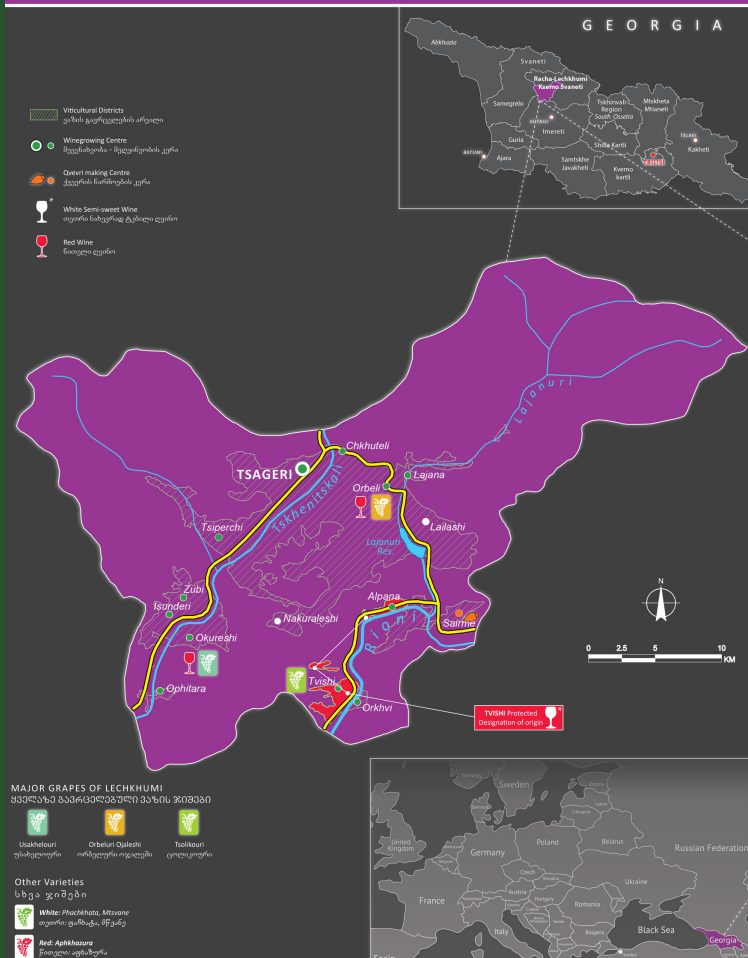


# RACHA WINE MAP



# LECHKHUMI WINE MAP



## PROJECT PARTNERS



Slovak-Georgian Chamber of Commerce

PROJECT IS FINANCED BY SLOVAKAID



FOR MORE INFORMATION  
 ABOUT THE ROUTE  
 PLEASE CONTACT US

(+995)577 79 76 13  
 info@ecotourism.ge  
 Georgia, Tbilisi, Belinski st. 9



GREEN WINE ROUTE  
 IN THE CRADLE OF  
 WINE



Khvanchkara and  
 Twishi Terroirs, Georgia

www.ecotourism.ge





## ABOUT GREEN WINE ROUTES

Explore Georgian wine regions of Khvanchkara and Tvishi Terroirs, using themed routes that follow the principles of green tourism. Wine trails pass through the various vineyards and include spots for wine tasting, family-owned restaurants with delicious local cuisine, various agricultural experiences and homestays with the most hospitable people in the world - Rachians.



## Highlights of Georgian Wine-making

- 8000-year history of ceaseless wine-making tradition;
- Ancient Georgian traditional method of wine-making in Qvevri;
- Unique Georgian wines and more than 500 local grape varieties



## INSPIRATION FOR VISITING GEORGIAN WINE REGION - RACHA-LECHKHUMI

- Khvanchkara and Tvishi - highland terroirs of Georgia
- Untouchable nature and picturesque landscape
- Supra and Georgian Hospitality in Racha-Lechkhumi region



- Local ham (Lori) production and gastronomy
- Viticulture and winemaking traditions revitalization in traditional craftsmanship

